

1995-96

**Alpha Chi**

Jonathan Bennett  
Karis Boyer  
William Carter (S.P.A.S.)  
Leslie Dalton  
Aron Gabriel  
Jennifer Hinman Haney  
Elizabeth Kitsteiner  
Rebecca Long  
Rene McCarroll (S.P.A.S.)  
Stephanie Young McEntire  
Carol McMahan  
James "Bud" Roberts  
Joy Stumph  
Vickie Timms (S.P.A.S.)  
Mark Wright  
Rebecca Zoeller (S.P.A.S.)

**Leadership Scholars**

Jonathan Bennett  
Aron Gabriel  
Elizabeth Kitsteiner  
Rob Lewis<sup>1</sup>  
Stephanie Young McEntire  
Mark Wright

**Presidential Scholars**

Nathan Gragg  
Zola Griffin  
Jennifer Hinman Haney  
Carol McMahan

**Student Christian Association**

Jon Abel	President
Zola Griffin	Vice President
Rebecca Long	Secretary/Treasurer
Jeff Sheets	Assistant to the President
Jonathan Bennett	FCA
David Swanson	InterVarsity Missions Fellowship
Elizabeth Kitsteiner	Praise and Worship
Jon Abel, Rob Farkas	Student Chapel Band
Katie Kirk	Student Chapel Committee
Lisa McMurry	Urbana Coordinator
Stephanie Harrison	Vespers
Joy Bennett	ABCCM Children's Ministry
Jason Baker	Benevolence
Naomi Richard	Drama Ministry Team
Amber Gardner	Habitat for Humanity
Amanda Nesbitt	Missions
Kelly Hughes	Presbyterian Home/Big Brothers /Sisters
Lee Thomas	Princess Pearl Nursing Home
Emily Willis	Tutoring
Chris Shumacher	Young Life at Owen H.S.

**Logos Editor**

Denise Oblander

**NAIA All-American Scholar Athletes**

Aron Gabriel  
Sabrina Rogers  
Jeff Sheets

**Residential Assistants**

**Anderson Hall**  
Mindy Coyle  
Leslie Dalton  
Amber Gardner  
Kelly Hughes  
Amanda Nesbitt  
Mary Jo Snelson  
Teri Worley

**Davis Hall**

Jon Abel  
Brad Clemens  
Chris Day  
Jeff Sheets

**Howerton Hall**

Jason Baker  
Shane Brannock  
Alan Hines  
Chris Schumacher

**McGregor Hall**

Marci Vance  
Mark Wright

<sup>1</sup> - first semester

1995-96

**Student Government Association Executive Branch**

Karis Boyer	President
Scott Bowers	Vice President
Hunt Briggs	Secretary/Treasurer
Heath Peek	Senior Class President
Amy Parsley	Junior Class President
Steve Savell	Sophomore Class President
Parker Austin	Freshman Class President
Queen Musengwa	Student Activities Chair
Maura Buus	Senior Associate Justice

**Student Government Association Legislative Branch**

James Roberts	Senior Class Vice President
Tim Hatton	Senior Class Member-At-Large
Rebecca Wineka	Junior Class Vice President
Aaron Gilchrist	Junior Class Member-At-Large
Blake Hensley	Sophomore Class Vice President
Jeremy Witteveen	Sophomore Class Member-At-Large
Amy Parker	Freshman Class Vice President
Andrew Bobilya	Howerton Hall President
Jamie Jessee	Davis Hall President
Lisa Cox	McGregor Hall President
Sharlene Gaffoor	Anderson Hall President
Stephanie Cone	Off-Campus Representative
Jon Abel	Student Christian Association President

**Student Government Association Judicial Branch - Honor Court**

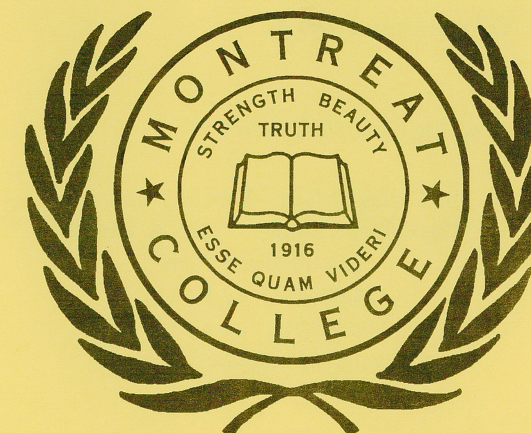
Chris Robertson	Senior Class Representative
Andrew Bobilya	Junior Class Representative
Terrence Johnson	Sophomore Class Representative
Tammy Sinanan	Freshman Class Representative

**Student Government Association Judicial Branch - Judicial Council**

Nathan Gragg	Chair
Stephanie Cone	Vice Chair
Sandy Roberts	Anderson Hall Representative
Mark Frazier	Davis Hall Representative
Colin Munroe	Howerton Hall Representative
Scott Bowen	McGregor Hall Representative

**Student Government Association Judicial Branch - Appeals Court**

Maura Buus	Senior Associate Justice
Joy Stumph	Assistant Justice
Derek Sims	Assistant Justice



1996  
SPRING  
HONORS  
CONVOCATION

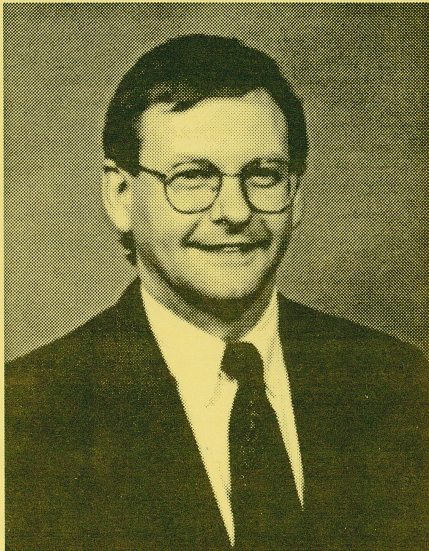
Montreat College  
11 A.M. – May 2, 1996



Program		
PRELUDE	John Hughes	
“Guide Me, O Thou Great Jehovah”		
PROCESSIONAL	John Goss	
“Praise, My Soul, the King of Heaven”		
The College Mace – Bonnie J. Lundblad The College Banner – John A. Chesky The Platform Party Marshals – Alpha Chi The Faculty and Cabinet Organist – Thomas S. Stierwalt		
INVOCATION	John A. Chesky	
<i>1995 David L. Parks Distinguished Professor</i>		
WELCOME	Karis Boyer	
<i>President, Student Government Association</i>		
GREETINGS ON BEHALF OF THE FACULTY	Don W. King	
<i>Vice President and Dean of Academics</i>		
INTRODUCTION OF SPEAKER	William W. Hurt	
<i>President</i>		
SPECIAL MUSIC		
“Build Thee More Stately Mansions”      Concert Choir and Celebration! Oliver Wendell Holmes/Gordon Young		
CONVOCATION ADDRESS	Mark DeVries	
<i>Associate Minister, First Presbyterian Church, Nashville, TN</i>		
PRESENTATION OF AWARDS		
<i>Elizabeth H. Maxwell Literature Award</i>	Richardson K. Gray	
<i>Greybeard Players Theatrical Excellence Awards</i>	Brian D. Fuller	
<i>Music Award</i>	Mark D. Johnson	
<i>Visual Art Exhibition Awards</i>	James D. Southerland	
<i>American Bible Society Scholastic Achievement Award</i>	Darwin K. Glassford	
<i>Christian Education Scholastic Achievement Award</i>	Darwin K. Glassford	
<i>SGA Person of the Year Award</i>	Heath Peek	
<i>SGA Excellence Award</i>	Karis Boyer	
<i>Kim Trapnell Servant Leader Award</i>	Charles A. Lance	
<i>Who’s Who Among Students in</i>		
<i>American Universities &amp; Colleges</i>	Don W. King	
<i>Faculty Service Award</i>	Don W. King	
<i>David L. Parks Distinguished Professor Award</i>	Don W. King	

SPECIAL MUSIC	Rob Lewis
“With All That I Am”	
BENEDICTION	R. Bradley Daniel
<i>1995 Teacher of the Year</i>	
RECESSIONAL	John Darwall
“Rejoice, the Lord Is King”	
POSTLUDE	Peter Scholtes
“They’ll Know We Are Christians”	

## Convocation Speaker



For 17 years, Mark DeVries has worked with youth, both in the local church and as a volunteer with Young Life. He has served as the Associate Minister for Youth and their families at First Presbyterian Church in Nashville, Tennessee for the past nine years.

In addition to his work as a youth pastor, he frequently leads training workshops for leaders and retreats for families and youth. He is the author of *Family Based Youth Ministry*, and has co-authored a family-based curriculum resource entitled *Bridges*. Mark and his wife, Susan, have three children: Adam, 14, Debbie, 10, and Leigh, 7.

## Departmental & Special Awards

**The Elizabeth H. Maxwell Literature Award**  
Established in 1992 in honor of Elizabeth Maxwell, professor emeritus. May be given to a graduating senior who has demonstrated outstanding achievement in literary studies as determined by the English faculty. The student must have demonstrated creativity and maturity in the field of literary studies.

**The Greybeard Players Theatrical Excellence Award**  
Available to sophomores, juniors and seniors who have documented financial need and who have demonstrated excellence and potential in the field of theatrical arts through exemplary participation in the work of the Greybeard Players.

**The Music Award**  
Established in 1990 to recognize the graduating senior(s) who has contributed most to the music program, in both academic and extracurricular music classes and activities.

**Visual Art Exhibition Awards**  
Awarded to individuals who have shown evidence of artistic potential in production and exhibition of visual art.

**The American Bible Society Scholastic Achievement Award**  
Presented by the American Bible Society upon recommendation of the Christian Ministries Division to a student who has excelled academically and has potential for making a signification contribution in the field of Biblical studies.

**The Christian Education Scholastic Achievement Award**  
Presented by the North American Association of Professors of Christian Education upon recommendation of the Christian Ministries Division to a student who has excelled academically and has potential for making a significant contribution in the field of Christian education.

**The SGA Person of the Year Award**  
Given annually by the Student Government Association to an individual who has excelled in all areas of the college.

**The SGA Excellence Award**  
Established in 1994 by the SGA Legislative Committee. Given annually to the member of the Student Government Association who has shown outstanding dedication and leadership throughout the year.

**The Kim Denise Trapnell Servant Leader Award**  
Established in 1994 in honor of Kim Denise Trapnell, an outstanding example of student leadership. Given annually to the student who best demonstrates a servant’s heart in leading others through service, attitude and relationships.

**Who’s Who Among Students in American Universities & Colleges**  
Members are selected for this national organization as outstanding campus leaders according to scholarship ability, participation and leadership in academic and extracurricular activities, citizenship and service to the school, and potential for future achievement.

**The Faculty Service Award**  
The faculty annually recognizes a graduating senior who has made outstanding contributions to the college and who gives evidence of effective Christian citizenship.

**The David L. Parks Distinguished Professor Award**  
Established in 1992 by the Board of Trustees in honor of Dr. David Parks’ many years of faithful service to the college. This award is chosen by the faculty using the criteria of creative and effective teaching, scholarship, personal and professional integrity, and commitment to the stated purpose of the college.