

# Worship and Conduct Songs

For Beginners and Primaries

## 1 Father, We Will Quiet Be

ELIZABETH MCE. SHIELDS  
*Reverently*

Mrs. CROSBY ADAMS

Fa - ther, we will qui - et be, While we lis - ten now to Thee,

(Pause between sections a few seconds for reverent listening.)

As we raise our heads we'll sing, "Thank you, God, for ev - 'ry thing."

Copyright, 1924, by Mrs. Crosby Adams

## 2 When to Church I Go

CAROLINE KELLOGG

DOROTHY WEST

Ver - y soft - ly I will walk, Ver - y gen - tly I will talk, When to church I go.

Tho' I can-not see Him there, God is with me ev-'rywhere; He is here I know.

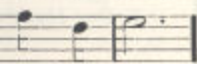
By permission of American Baptist Publication Society

MARTIN LUTHER

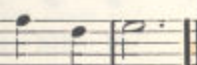
Mrs. CROSBY ADAMS



on the hay,  
you and me;  
sick ones well,  
on His knee;



hap - py day.  
boy was He.  
that He'd tell.  
come to me."



THAN E. SPILLMAN



The lit - tle Lord  
close by me for -



e bright sky looked  
ear chil - dren in



ep on the hay.  
e with Thee there.



1. A - way in a man - ger, no crib for His bed, The lit - tle Lord  
2. Be near me, Lord Je - sus; I ask Thee to stay Close by me for -

Je - sus laid down His sweet head; The stars in the sky looked  
ev - er, and love me, I pray; Bless all the dear chil - dren in

down where He lay The lit - tle Lord Je - sus a - sleep on the hay.  
Thy ten - der care. And fit us for heav - en to live with Thee there.

## A Night Time Song

Musical score for "A Night Time Song" in 6/8 time, featuring piano (*p*) and pianissimo (*pp*) dynamics. The score consists of two systems of two staves each (treble and bass clef). The first system includes a piano (*p*) dynamic marking. The second system includes a pianissimo (*pp*) dynamic marking and a *rit...* (ritardando) instruction.

56

## Song of the Sea

ALICE C. D. RILEY

Mrs. CROSBY ADAMS

Musical score for "Song of the Sea" in 6/8 time, featuring lyrics. The score consists of two systems of three staves each (treble, vocal, and bass clef). The lyrics are: "Sea-shell, murmur-ing in my ear, Songs of the wide, wide sea, Lean to its lip and you shall hear The sto-ry it tells to me." The score includes a vocal line and piano accompaniment.

From "Worship Songs for Primaries," Adams  
Used by permission of Clayton F. Summy Co., Publishers

Worship and Conduct Songs  
*for*  
Beginners and Primaries